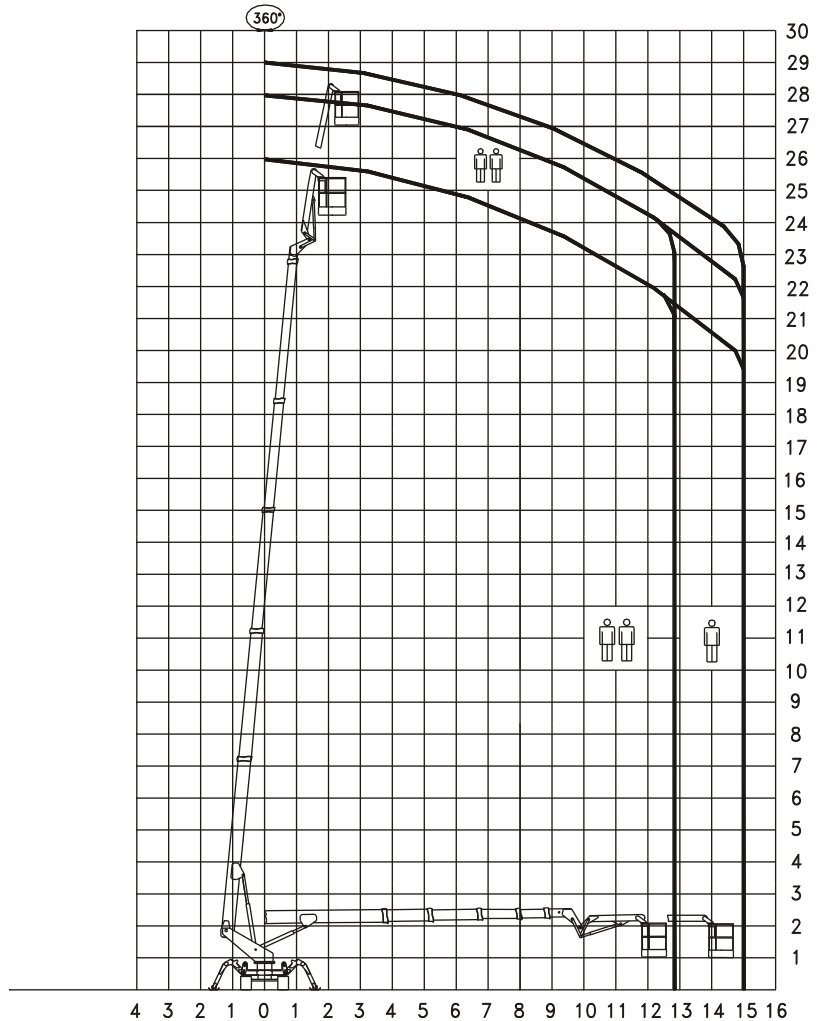
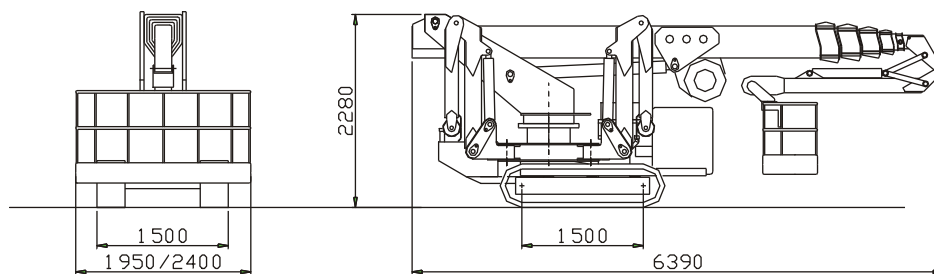


# RAGNO TSJ 28 Versione Cingolata \ Crawler Version \ Raupen Version \ Version Chenilles



MOTORE DIESEL	DIESEL ENGINE	DIESELMOTOR	MOTEUR DIESEL	10 kW
MOTORE ELETTRICO	ELECTRIC MOTOR	ELEKTROMOTOR	MOTEUR ELECTRIQUE	220V-2,2kW
PENDENZA MAX	MAX SLOPE	MAX STEIGFAHIGKEIT	PENTE MAXI	40%
VELOCITA' MAX	MAX SPEED	MAX GESCHWINDIGKEIT	VITESSE MAXI	2 KM/H APPR
ROTAZIONE TORRETTA	TURNTABLE SLEWING	DREHTURM ROTATION	ROTATION TOURELLE	360° CONT.
NAVICELLA AEREA	AERIAL CAGE	ARBEITSKORB	NACELLE	2.0x2.4x 0.8 m.
ROTAZIONE NAVICELLA	CAGE ROTATION	KORB ROTATION	ORIENTATION NACELLE	80°+ 80°
PORTATA UTILE	SAFE WORK. LOAD	ZULADUNG	CHARGE UTILE	200 KGS
PESO	WEIGHT	GEWICHT	POIDS	5.800 KGS



## Palazzani Industrie SpA

I 25050 PADERNO F.C. (BS) - ITALIA  
 Tel ++ 39 030 6857073 - Fax ++ 39 030 657079  
 e-mail: [platforms@palazzani.it](mailto:platforms@palazzani.it)  
 url: [www.palazzani.it](http://www.palazzani.it)

SCHEDA N°355A